

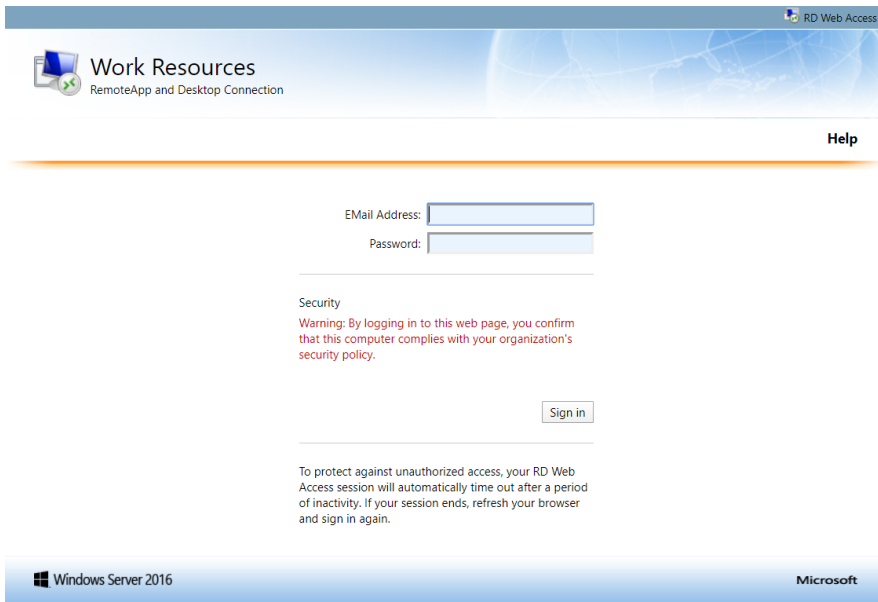
Remote App Access



Certain applications can be accessed remotely via a link on your School/College website. Towards the top right of the page you will see a number of links, one of which looks like a PC as seen below:



Click the Remote Access link, and you will be presented with a sign-in page.

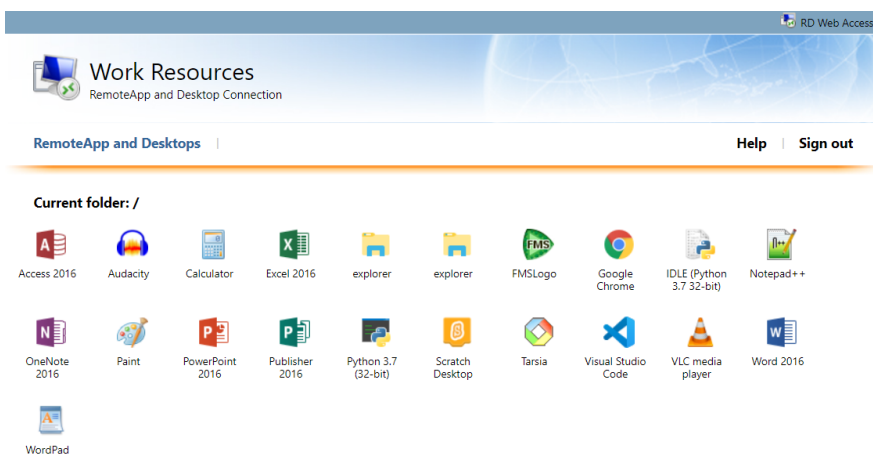


The 'Email Address' needs to be in the following format:

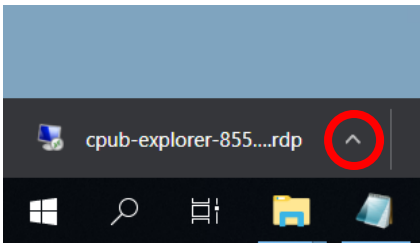
forchacademy*(school email address here)*

Then enter your normal school password

Once signed in, you'll be presented with a list of Apps

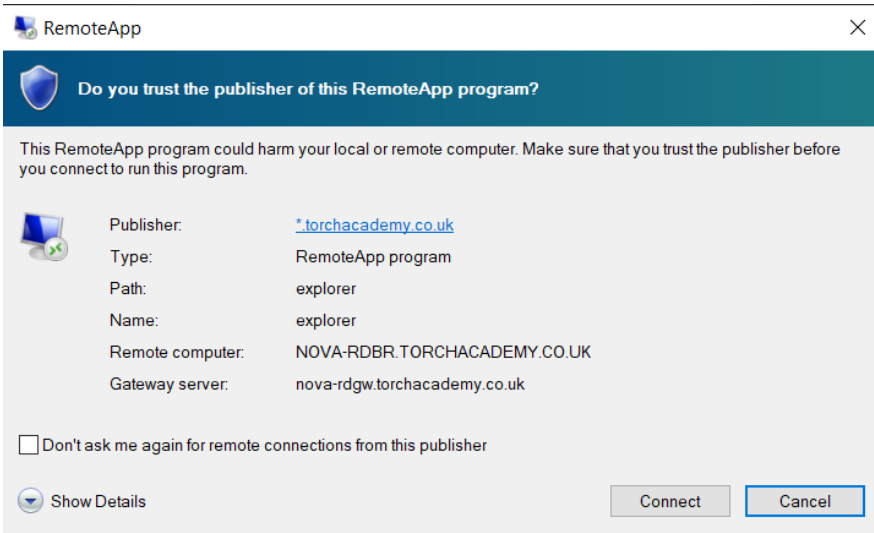


Click once on the desired app, and the file will download at the bottom of your browser window, and look something similar to the image below:

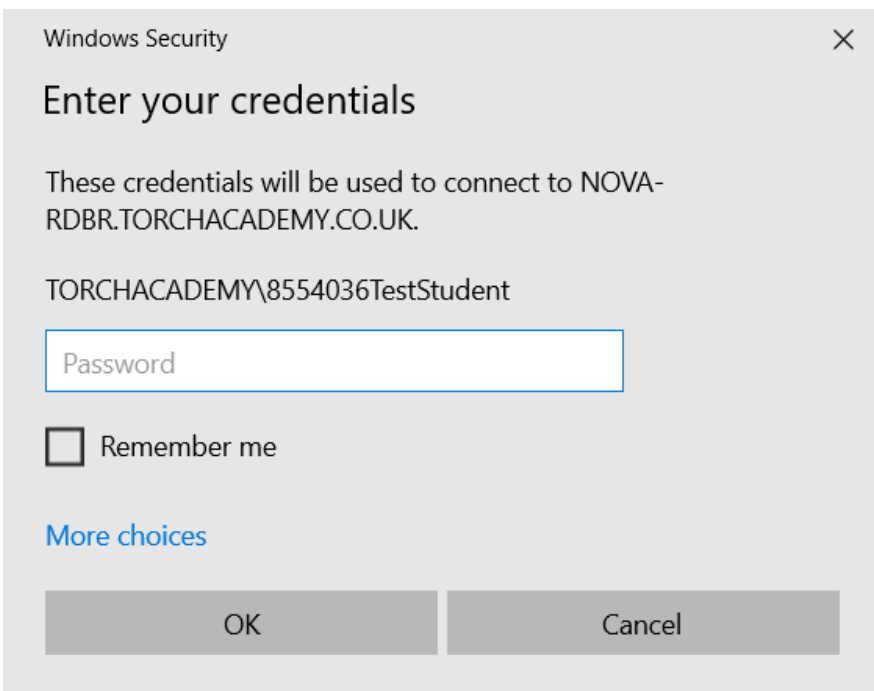


Click on the arrow next to the downloaded file, and click 'Open'

When presented with the window below, click 'Connect'



Enter your password (occasionally it will ask you to do this twice)



Wait whilst the remote session configures. When this is complete, your remote app will open.